



**sartorius**  
mechatronics

The Sartorius BSA series:  
The new price | performance class



turning science **into solutions**

# The new BSA series from Sartorius: The winning combination of technology, features and operating design

The new Sartorius BSA is a truly versatile balance with all-around capabilities. It features a winning combination of Sartorius' legendary technology, an abundant package of features and options, and an operating design that enables especially efficient operation. BSA is a lab balance you can rely on, one that will work perfectly over the years, delivering accurate results day in and day out.



The new top-end models of the BSA precision balances deliver outstanding price | performance, with weighing ranges of 1 mg to 620 g and 10 mg to 6,200 g.



Nearly all BSA balances incorporate the exceptional monolithic weigh cell available only from Sartorius. This proprietary 21st century technology ensures high weighing accuracy and reliability for daily lab routines.



All BSA-CW balances come standard with an internal, motorized calibration and adjustment weight. Just touch the CAL key, and the balance will calibrate and adjust automatically.

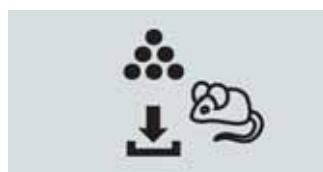


The backlit and high-contrast display provides outstanding readouts even under poor lighting conditions.

Connected to the optional Sartorius YDP20-OCE printer, the BSA generates ISO|GLP-compliant printouts of raw data and calibration and adjustment information.



Short, plain-language text prompts and cursor keys for user-friendly navigation make it easy to customize the configuration of the balance.



BSA balances offer you a wide selection of built-in application programs, such as weighing in percent, animal weighing, mass unit conversion by toggling and counting.



The level indicator is positioned directly next to the display for fast and easy levelling.




The draft shield on BSA analytical balances and 1 mg precision balances provides optimal lighting and viewing conditions inside the weighing chamber.

Especially in today's fast-paced lab routines, simple and reliable operation is a must. That's why the control panel of the BSA is so clearly structured and easy to understand.




# Specifications

## Analytical balances



Model	Readability (g)	Weighing capacity (g)	Pan size (mm)	Repeatability (g)	Linearity (g)	Response time (avg., sec.)	Calibration and adjustment
BSA224S	0.0001	220	Ø90	0.0001	0.0002	2.5	External
BSA224S-CW	0.0001	220	Ø90	0.0001	0.0002	2.5	Internal
BSA124S	0.0001	120	Ø90	0.0001	0.0002	2.5	External
BSA124S-CW	0.0001	120	Ø90	0.0001	0.0002	2.5	Internal

## Precision balances

Model	Readability (g)	Weighing capacity (g)	Pan size (mm)	Repeatability (g)	Linearity (g)	Response time (avg., sec.)	Calibration and adjustment
BSA223S	0.001	220	Ø115	0.001	0.002	1.3	External
BSA223S-CW	0.001	220	Ø115	0.001	0.002	1.3	Internal
BSA323S	0.001	320	Ø115	0.001	0.002	1.3	External
BSA323S-CW	0.001	320	Ø115	0.001	0.002	1.3	Internal
BSA423S	0.001	420	Ø115	0.001	0.002	1.3	External
BSA423S-CW	0.001	420	Ø115	0.001	0.002	1.3	Internal
BSA623S	0.001	620	Ø115	0.001	0.002	1.3	External
BSA623S-CW	0.001	620	Ø115	0.001	0.002	1.3	Internal
BSA822	0.01	820	Ø150	0.02	0.03	1	External
BSA822-CW	0.01	820	Ø150	0.02	0.03	1	Internal
BSA2202S	0.01	2,200	180 × 180	0.01	0.02	1.1	External
BSA2202S-CW	0.01	2,200	180 × 180	0.01	0.02	1.1	Internal
BSA3202S	0.01	3,200	180 × 180	0.01	0.02	1.1	External
BSA3202S-CW	0.01	3,200	180 × 180	0.01	0.02	1.1	Internal
BSA4202S	0.01	4,200	180 × 180	0.01	0.02	1.1	External
BSA4202S-CW	0.01	4,200	180 × 180	0.01	0.02	1.1	Internal
BSA6202S	0.01	6,200	180 × 180	0.01	0.02	1.1	External
BSA6202S-CW	0.01	6,200	180 × 180	0.01	0.02	1.1	Internal
BSA2201	0.1	2,200	180 × 180	0.1	0.3	1	External
BSA2201-CW	0.1	2,200	180 × 180	0.1	0.1	1	Internal
BSA5201	0.1	5,200	180 × 180	0.1	0.3	1	External
BSA5201-CW	0.1	5,200	180 × 180	0.1	0.1	1	Internal
BSA8201	0.1	8,200	180 × 180	0.1	0.3	1	External
BSA8201-CW	0.1	8,200	180 × 180	0.1	0.1	1	Internal

Accessories available on request.

Sartorius AG  
Weender Landstrasse 94-108  
37575 Goettingen, Germany

Phone +49.551.308.0  
Fax +49.551.308.3289

info.mechatronics@sartorius.com  
www.sartorius-mechatronics.com

Specifications subject to change without notice.  
Printed in Germany on paper that  
has been bleached without any use of chlorine.  
Publication No.: WL-1011-e09011  
Order No.: 98649-009-26